



TECHSHIELD

By

Touax®
MODULAR BUILDING SOLUTIONS

5 REASONS

to choose modular construction

1

Reduced investments

2

Quick installation

3

Flexible solution

4

High quality

5

Responsible construction



ABOUT TOUAX:

Founded in 1898 and listed on the Paris stock exchange since 1906, TOUAX puts its know-how and expertise in modular construction and sustainable transport to work for its customers. TOUAX has been involved in modular construction since its beginnings in the 1970s, more than fifty years ago, and today operates one of the few world-class production plants that is triple certified for quality, safety and the environment using Lean Six Sigma methodologies, enabling it to meet its customers' needs for all their projects, particularly those requiring high performance.

OUR PROMISE:

At Touax, our promise is to offer you an alternative to traditional construction by providing you with a better quality turnkey building solution, at a lower cost and with much shorter lead times, so that you can get on with it more quickly and without worrying about completion.

BENEFITS AND CERTIFICATIONS:

Our "TechShield" range of modular buildings offers flexibility in layout, allowing you to configure your spaces to your specific needs. Thanks to our expertise in modular construction, we are able to deliver and install your workspaces quickly, reducing fit-out times and getting you up and running faster.

Recognising that every business has unique needs, our modular solutions can be customised to reflect your company's identity and culture, creating a turnkey working environment. What's more, our solutions are designed to maximise the use of space, allowing you to make the most of your premises while increasing operational efficiency.

At Touax, the quality of our solutions is our priority. We are proud of our triple-certified factory and international standards that demonstrate our commitment to excellence and customer satisfaction. Our modular solutions meet the highest standards for safety, quality and durability.



***Africa's first triple-
certified plant***

ISO9001:2015

ISO14001:2015

ISO45001:2018



WHY CHOOSE TECH-SHIELD SOLUTIONS?



MODULAR HOSPITALS:

Modular structures for temporary or permanent medical use, offering dedicated areas for care, consultation and recuperation, equipped to meet medical needs.

CLEAN ROOMS/COLD ROOMS:

Sterile, controlled environments for activities requiring specific conditions of temperature, humidity and cleanliness, such as pharmaceutical research or the food industry.

MODULAR INFIRMARIES:

Temporary, mobile or permanent medical facilities for worksites, events or emergency situations, equipped for first aid and the management of minor injuries.

RESEARCH AND DEVELOPMENT CENTRES:

Design of modular structures for research and development activities in various sectors.

SCIENTIFIC RESEARCH LABORATORIES:

Design of modular laboratories for research and development in a variety of scientific fields.

ANALYSIS LABORATORIES:

Modular solutions for analysis and testing in controlled environments.



SHELTERS:

Modular shelters to house technical equipment such as generators, transformers and computer servers, or to create secure storage areas.

TECHNICAL INSPECTION ROOMS:

Modular spaces for technical monitoring and control in industrial or technical environments, providing a space for monitoring and managing operations.

TEST CENTRES:

Provide modular centres for technical testing and verification, tailored to the specific needs of each industry.



The Touax "TechShield" range opens up new horizons for the healthcare sector by offering modular technical solutions tailored to its specific challenges. From modular hospitals to analysis laboratories guaranteeing a controlled environment, our solutions offer unrivalled flexibility to meet the evolving needs of the healthcare sector. The modularity of our structures means that functional spaces can be created quickly, while complying with current standards.

Our facilities offer a flexible and controlled environment for advanced scientific research, as well as reliable and resilient telecommunications infrastructures. From mobile laboratories to specialist test centres and shelters for technical equipment, our range meets the specific needs of these demanding sectors. The modularity of our structures means they can be adapted quickly to meet changing requirements, while ensuring optimum performance in line with the most stringent standards.



The TechShield range redefines modular engineering standards to support innovation and connectivity in these key areas. Its adaptive spaces enable scientists, researchers and innovators to conduct advanced experiments and cutting-edge tests in optimal conditions. Whether exploring new discoveries or developing groundbreaking technologies, our modular solutions ensure unparalleled flexibility to support creativity and innovation.

In telecoms operations, the TechShield range meets the growing challenges of connectivity and communications. Our modular infrastructures provide the stability and resilience needed to maintain reliable networks, particularly in remote or developing regions. Our range ensures continuity of service and efficient management of communications networks, promoting sustainable development and connectivity.



By redefining the standards of modular engineering, the "TechShield" range provides a strategic response to these key areas, creating environments conducive to innovation, research and sustainable connectivity, with outstanding efficiency and reliability. Each technical solution in the "TechShield" range offers a response tailored to the specific needs of each area of activity, guaranteeing functional, durable and efficient installations for your technical projects.



EXPERTISE AND KNOW-HOW:

Our highly skilled and committed teams are present on every site to ensure the success of every modular construction project. We overcome unique challenges for customers from a wide range of sectors, providing innovative and bespoke modular solutions. Each project demonstrates our personalised approach and our ability to design modular structures that meet the specific needs of our customers.

At the heart of our expertise is our unwavering commitment to quality. Each project is executed with meticulous attention to detail and using only the highest quality materials. We rely on strict manufacturing standards and rigorous quality controls to ensure that our modular structures meet the highest standards of excellence.



BENEFITS

We are proud to contribute to exceptional projects that have a positive impact on communities and businesses. You can rely on our expertise and recognised know-how in modular construction to help you realise your most ambitious projects.

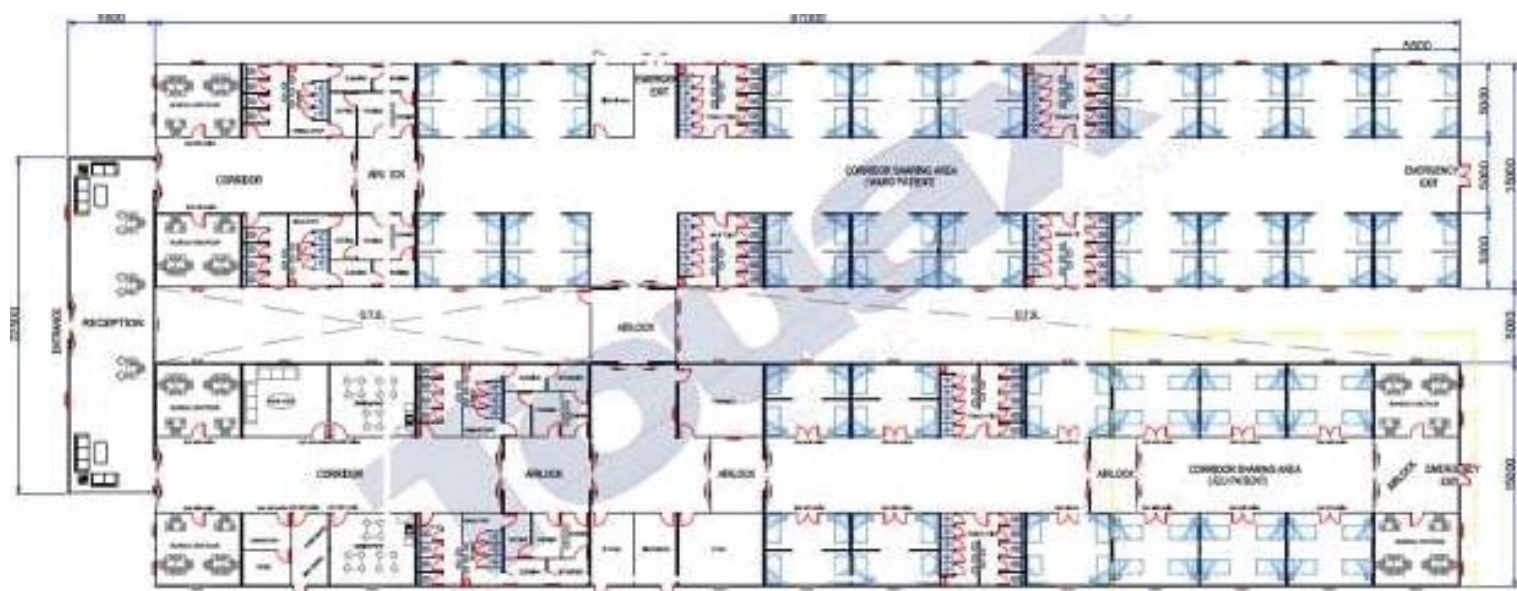
From industry to education, from healthcare to public infrastructure, our expertise covers a wide range of sectors. Our versatility and adaptability enable us to meet any challenge by offering innovative, customised modular solutions that meet the unique requirements of each project.

Our skilled teams are committed to realising your vision. Whether you need a specific modular solution or bespoke support throughout the process, our experts are here to guide you. We pride ourselves on working closely with our customers to create aesthetically pleasing and functional spaces that exceed their expectations.

OUR ACHIEVEMENTS



OUR MODULAR UNITS



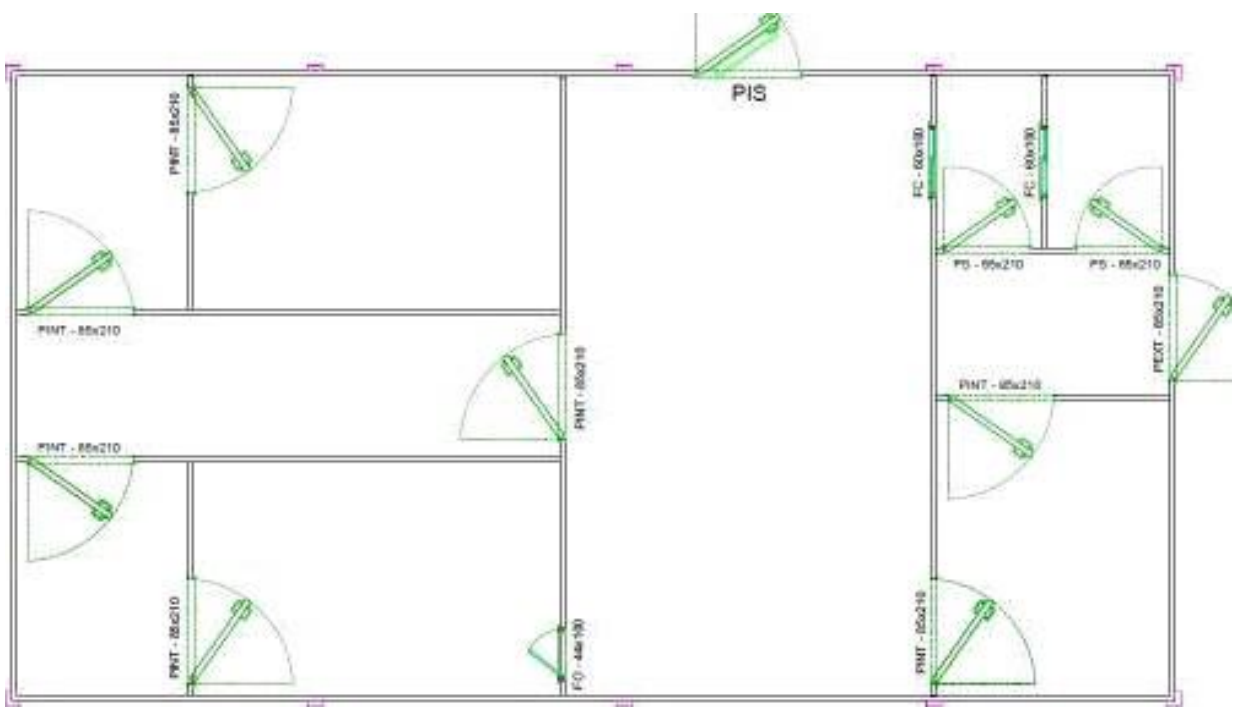
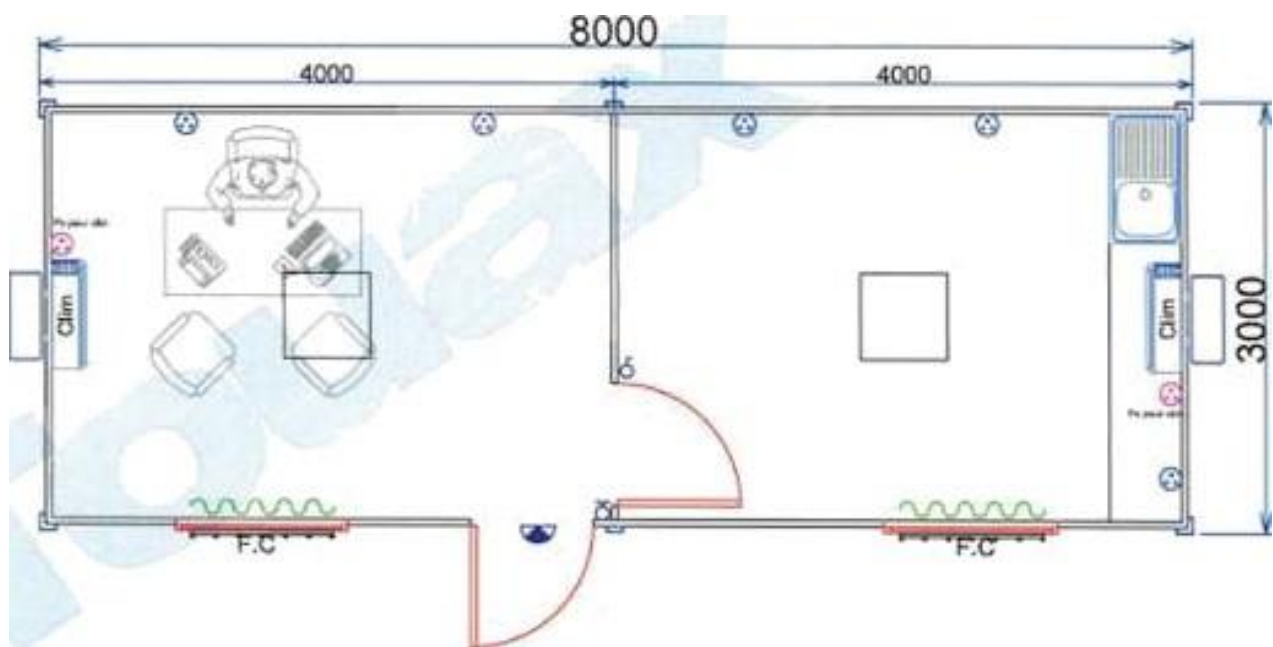
USE:
Hospital

SURFACE:
2770 m²

TIME-TO-MARKET:
12 Weeks

TECHNICAL SPECIFICATIONS:

- Thermal Acoustic Insulation
- Interior fittings
- Supply of the Technical package



9500

USE:
Infirmary

TIME-TO-MARKET:
7 Days

Surface:
24 m²

TECHNICAL SPECIFICATIONS:

- Interior fittings
- Thermal Acoustic Insulation
- Air conditioning

USE:
Laboratories

TIME-TO-MARKET:
4 Days

Surface:
52 m²

TECHNICAL SPECIFICATIONS:

- Lighting controlled by motion detector
- Extractor with filter
- Interior partitioning

THE MODULAR APPROACH TO RESPONSIBLE CONSTRUCTION

Key sectors

- Education
- Industry
- Construction
- Food industry
- Services
- Energy

Applications

- Administration
- Reception room
- Classrooms
- Changing rooms & toilets
- Infirmary
- Restaurant
- Library
- Training room

Development Charter



Function

Depending on the nature of the building, we can work with you to optimise its use and dimensions.




Layout

Our many years of experience mean we can help you design your interior partitioning to suit its use and purpose.



Fitting out

We can advise you on the layout options that need to comply with a wide range of regulations.



Technical specifications

In addition to sound and heat insulation, we can also provide you with our expertise in meeting technical regulations.

Infinite customization



Integration of home automation



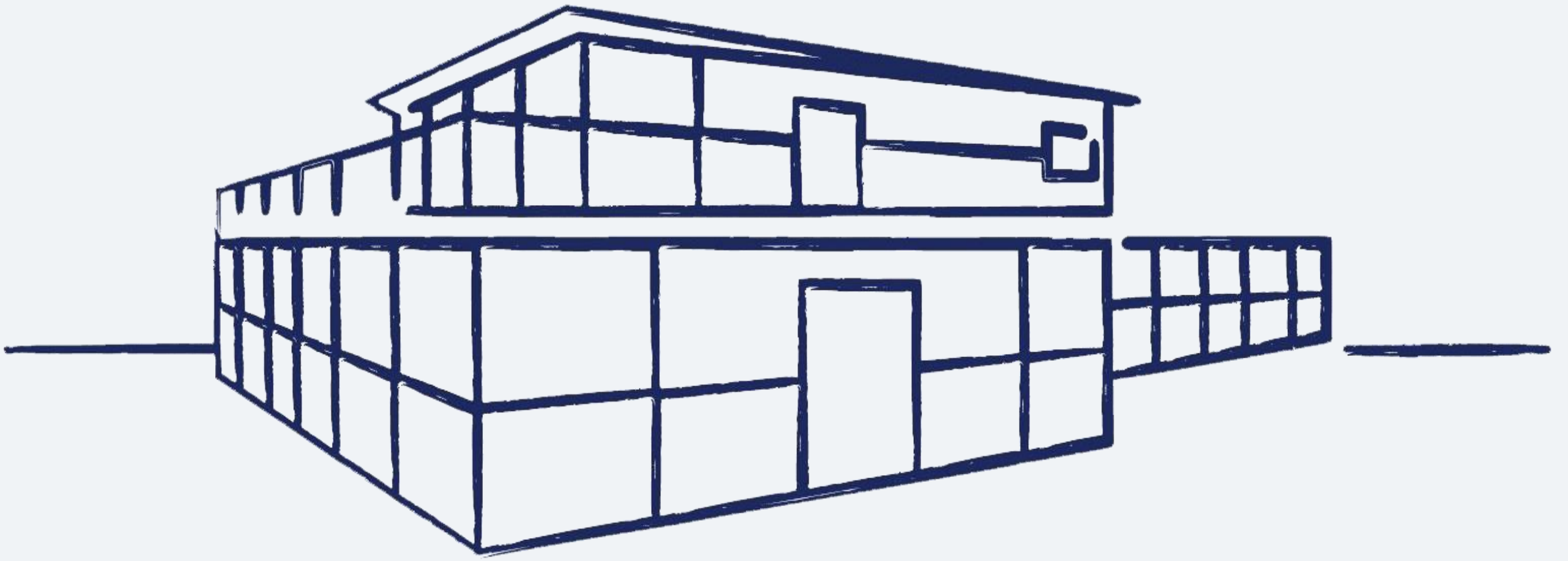
Free configuration



Made-to-measure cladding

THEY HAVE PLACED THEIR TRUST IN US





BUILDING THE FUTURE WITH TOUAX

Touax[®]
MODULAR BUILDING SOLUTIONS

REQUEST A QUOTE

CONTACT-MODULAR-BUILDING@TOUAX.COM

+212 529 04 83 00

WWW.TOUAX-MODULAR-BUILDING.COM

Z.I. LABZOA, 20810, MOHAMMEDIA, MAROC

TOUR FRANKLIN, 100-101 TERRASSE BOIELDIEU, 92042 PARIS-LA DEFENSE, FRANCE